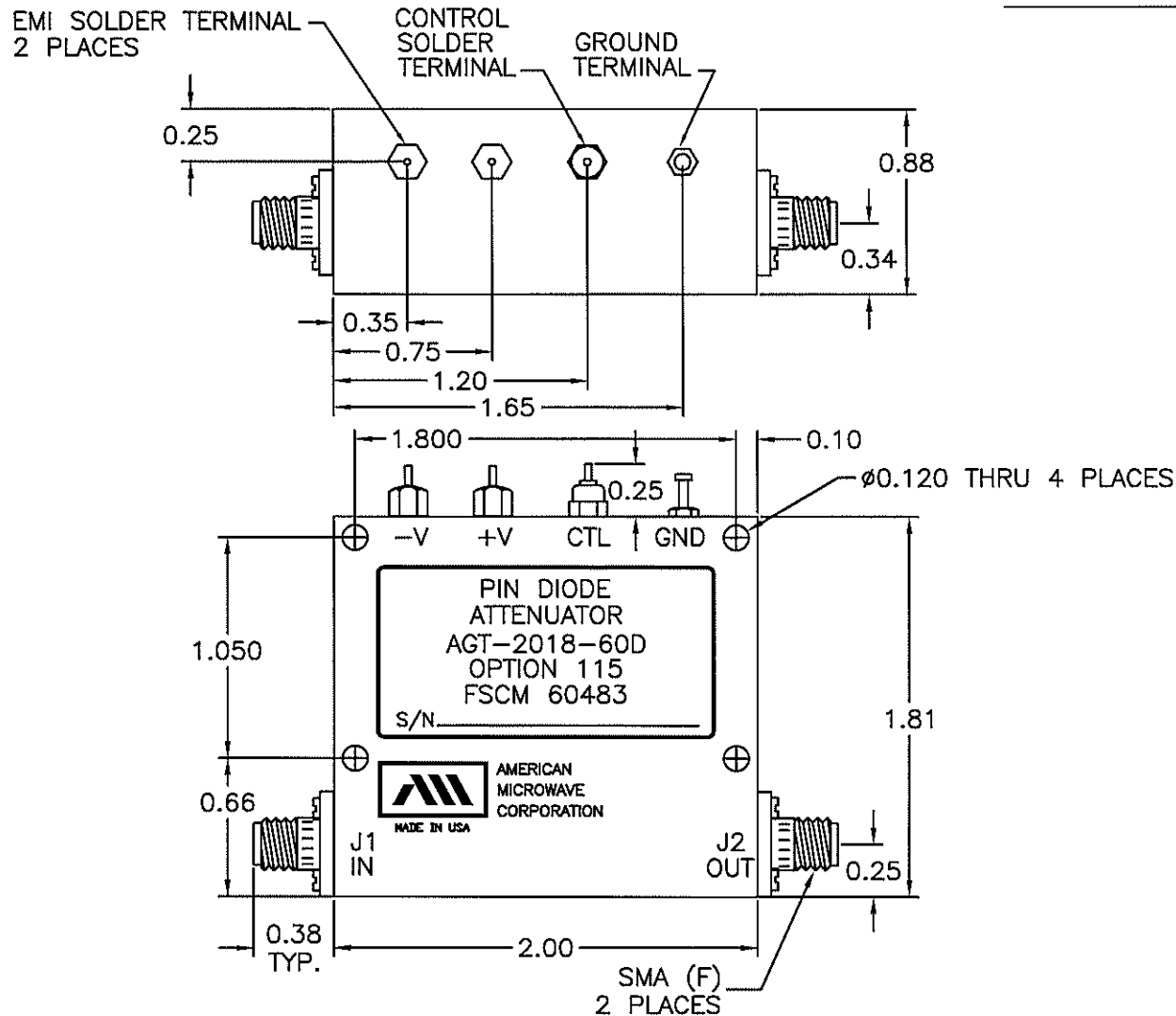


DESCRIPTION

AMC MODEL AGT-2018-60D OPTION 115 IS A BROAD BAND VARIABLE ATTENUATOR/MODULATOR WITH 2dB/VOLT ANALOG CONTROL AND +20dBm RF POWER.

MECHANICAL OUTLINE



NOTES:

- 1) DIMENSIONS ARE IN INCHES
- 2) TOLERANCES: X.XX ±0.020
X.XXX ±0.010
APPROX. 4.0 OZ
- 3) WEIGHT:



AMERICAN MICROWAVE CORPORATION

7311G GROVE RD., FREDERICK, MD. 21701

TEL: (301) 662-4700 FAX: (301) 662-4938

APPROVALS	DATE
DRAWN <i>R. Kelly</i>	11/13/07
CHECKED <i>R. Kelly</i>	11/20/07

PRODUCT FEATURE
AGT-2018-60D OPT 115
0.3 TO 18GHz FREQUENCY

SIZE A

SHEET 2 OF 2

DWG. # 100-A021-000

DESCRIPTION

AMC MODEL AGT-2018-60D OPTION 115 IS A BROAD BAND VARIABLE ATTENUATOR/MODULATOR WITH 2dB/VOLT ANALOG CONTROL AND +20dBm RF POWER.

SPECIFICATIONS

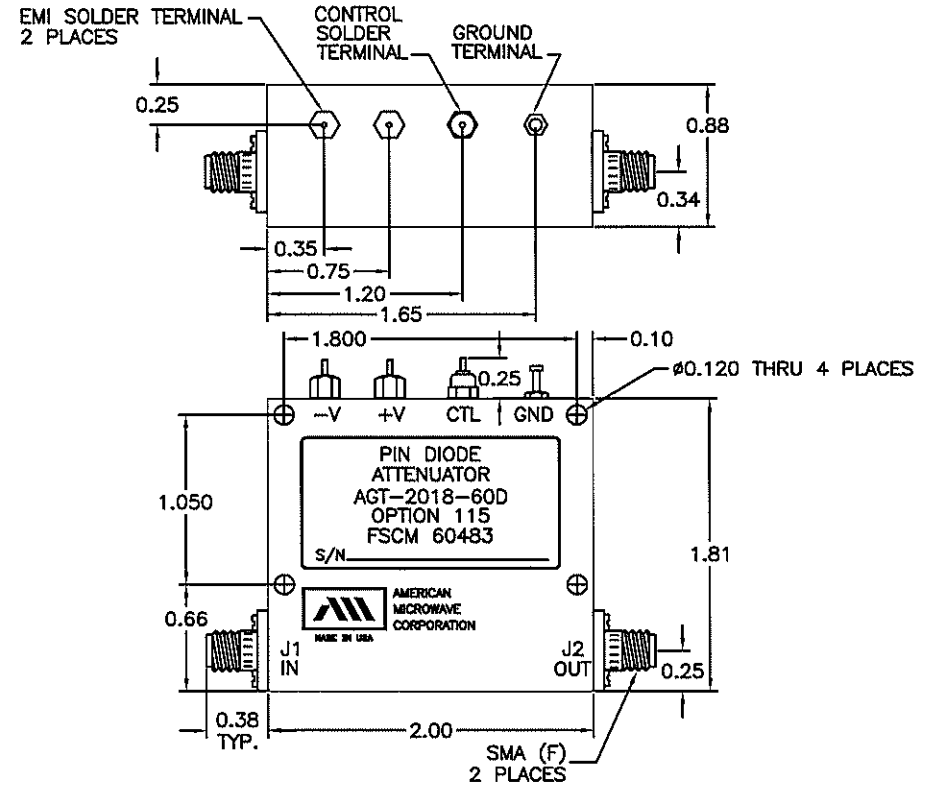
- FREQUENCY RANGE 0.3 TO 18GHz
- INSERTION LOSS 3.5 dB MAXIMUM
- ATTENUATION FLATNESS (± dB MAXIMUM) 0 - 14dB: ±0.8dB MAX
- ATTENUATION ACCURACY 0 - 14dB: ±1.0dB MAX
- SWITCHING SPEED 3 μsEC
- VSWR 2.0:1 MAXIMUM
- CONTROL 2dB/VOLT ANALOG CONTROLLED
- POWER SUPPLY +12VDC @ 210 mA MAXIMUM
-12VDC @ 30 mA MAXIMUM
- CONNECTORS
RF INPUT/OUTPUT SMA FEMALE
POWER AND CONTROLS SOLDER PIN CONTROL
- OPTION 115: +20dBm RF POWER

ENVIRONMENTAL RATINGS

- TEMPERATURE -55°C TO +125°C (OPERATING)
-65°C TO +125°C (STORAGE)
- HUMIDITY MIL-STD-202F, METHOD 103B COND. B
- SHOCK MIL-STD-202F, METHOD 213B COND. B
- VIBRATION MIL-STD-202F, METHOD 204D COND. B
- ALTITUDE MIL-STD-202F, METHOD 105C COND. B
- TEMPERATURE CYCLE MIL-STD-202F, METHOD 107D COND. A

REVISIONS				
ZONE	REV.	DESCRIPTION	DATE	APPROVED
	-	ORIGINAL RELEASE	11/19/07	<i>[Signature]</i>

MECHANICAL OUTLINE



NOTES:

- 1) DIMENSIONS ARE IN INCHES
- 2) TOLERANCES: X.XX ±0.020
X.XXX ±0.010
APPROX. 4.0 OZ
- 3) WEIGHT:

APPROVALS	DATE
DRAWN <i>[Signature]</i>	11/19/07
CHECKED <i>[Signature]</i>	11/20/07

AMERICAN MICROWAVE CORPORATION

7311G GROVE RD., FREDERICK, MD. 21701
TEL: (301) 662-4700 FAX: (301) 662-4938

PRODUCT FEATURE

AGT-2018-60D OPT 115

0.3 TO 18GHz FREQUENCY

SIZE A

SHEET 1 OF 2

DWG. # 100-A021-000